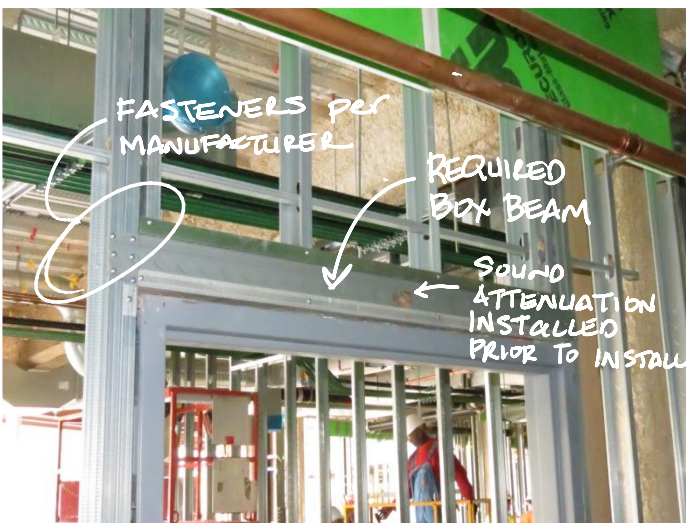
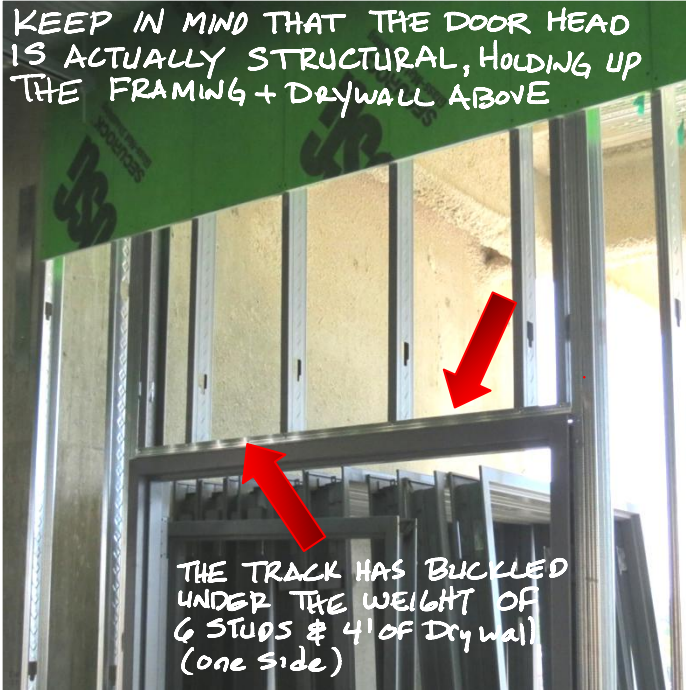


Opening Headers...General rule of thumb:

An opening 36" wide w/ 36" of gypsum board (both sides) above the opening is the most that a typical 20ga floor track can accept without overstressing...



Typically, the drawings and/or specifications show just a bottom track for the door header... generally, this is NOT enough based on the capacity of the bottom track.

A box header typically will be required for all openings greater than 36" and/or walls above greater than 36" ... *If you have a floor-to-floor height of 14', we have about 6'-7' of drywall above the door opening, which generally will exceed the capacity of a 20ga bottom track...*

The header design & the connection of the box header should be by the manufacturer of the framing material.

Discuss with your non-structural framing contractor as early as possible and have them talk to their manufacturer early.

Try and get this information in the bidding documents so that everyone is bidding the same condition throughout and has included this typically overlooked item.